

# CONTACT PLUS® NÉO Toilet raiser



NEW DESIGN

XXL 

The new generation of **Contact plus Néó** toilet raisers brings a comfort never equalled on the market thanks to the Herdegen Softinject technology. With its double fixing lips, **Contact Plus Néó** quickly and securely fits on all standard toilet bowls to raise their height by 11 cm.

Materials: injected HR foam, PVC skin  
Cleaning: non-abrasive cleaner, dry with a soft cloth  
Autoclavable (5min at 90°C and 80% humidity)



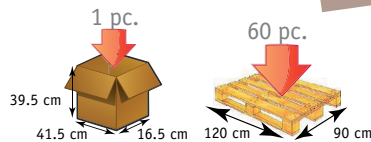
- > Tested and certified up to 185 kg
- > High-resilience foam and soft PVC skin
- > Global innovation: unmatched comfort and safety



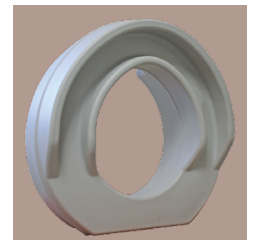
Video presentation

Packaging:  
Pieces per box: 1  
Pallet: 60

2-YEAR WARRANTY  
MAX. USER'S WEIGHT: 185 KG



Unmatched comfort and safety



Easy to install without screws or tools

## TECHNICAL FEATURES

	Contact plus ® Néó with lid
Overall width	37 cm
Seat opening	21*26 cm
Toilet elevation	11 cm
Overall height	16 cm
Overall depth	41 cm
Weight	2,5 kg



Retail box

## IDENTIFICATION CODES

Code	Item	EAN Code	HS Code	GMDN	CND
500300n	Contact plus ® Néó with lid	3701127704433	392490009	091218	Y091215